

As you start your tour,

look for the Fall Color Tour directional signs (shown here) that correspond to the route you have chosen. Tours No. 1 & 2 begin a short distance east of Cable and proceed through Lake Namakagon and Grand View. Tour No. 3 begins north of Cable and proceeds south of Drummond and then north to the Delta Lakes Area.



Enjoy your tours and watch for our helpful signs. These signs have been furnished by the Cable Area Chamber of Commerce and U.S. Forest Service.

You will find many places to stay during your visit to our area. Along the Fall Color Tour routes there are many restaurants and



taverns at which to stop and enjoy a hearty breakfast, light lunch or complete dinner. The Cable Area Vacation Guide is a companion piece to accompany your Fall Color Tour brochure. The Vacation Guide can help you locate accommodations, eating establishments, shops, and services along the way and may be obtained at the Chamber Office/Visitor Center. Stop in and consult with the staff for answers to your questions about our area.

Drive carefully and courteously. Watch for wildlife, deer, and other creatures of the forest who can suddenly appear on roadways. Many species of birds and animals make their home here. Be on the lookout for the whitetail deer, black bear, coyote, fox and raccoon, to name just a few. For an unusual sight, keep an eye out for eagles and newly re-introduced wolves and elk.

Protect the fall legacy that nature has lavished on us. Be especially careful with matches and cigarettes. Please put all refuse in proper containers.

We hope you enjoy your tours of the beautiful and colorful forest and return to our area often.

Cable Natural History Museum

The Cable Natural Museum is on County Hwy M, two blocks east of Hwy 63 in Cable. Exhibits in the museum change regularly, and traveling exhibits are often featured. The museum has a regular summer lecture and field trip series; a fun "Junior Naturalists" program for kids (summertime), special workshops, and other exciting programs that happen throughout the year. For more information and/or identification of trees and their colors, plants or wildlife, stop by and talk with their staff naturalist. Call 715-798-3890, or visit their Web site at www.cablemuseum.org.



Forest Lodge Library

This historical hand-hewed log library, attached to the Cable Natural History Museum, was built in 1925. This full service public library offers Internet access, an excellent children's selection and Wis. and Native American sections. From the stone fireplace and hardwood floor to the showcase clock on the mantle, visitors will find the atmosphere warm & friendly. Call 715-798-3189, or visit their Web site at www.cheqnet.net/~cablelib/



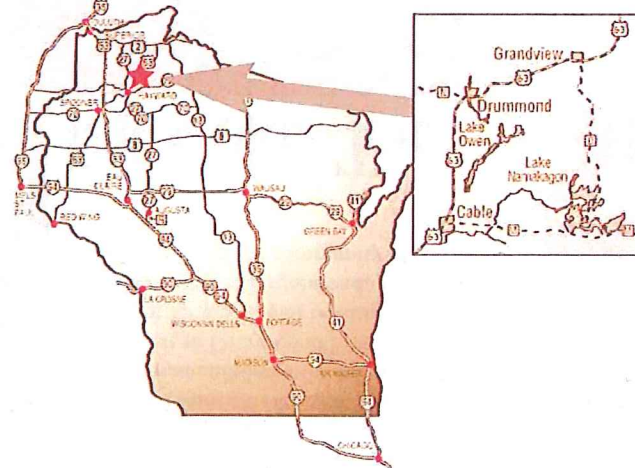
Drummond Public Library & Historical Museum

The new building, housing the library and museum, is designed after the original Rust Owen Company Store. Both the location and the design have significant links to the past. The library provides Internet access, current and best selling children and adult materials, and a very large collection of popular videos. The museum depicts the history of Drummond, a company town. The collection features historic photographs and artifacts from the logging camps and mill operations, giving insight into the lives of area pioneer families. It also includes a wildlife collection featuring birds and animals indigenous to the area. Call 715-739-6290, or send e-mail to: drumlib@cheqnet.net



A symphony of spectacular color awaits the fall visitor to the 844,000 acre Chequamegon National Forest. The breathtaking display of topaz, burgundy, ruby, and emerald can be yours on a leisurely walk or comfortable drive. Don't forget to take in a game of unhurried golf on one of our many area courses ... dine out at a superb restaurant ... fish in our crystal clear lakes and rivers ...

Fall is truly at its finest in the Cable area. Welcome!



For lodging referrals and area information, contact the:

Cable Area Chamber of Commerce
PO Box 217, Cable, Wisconsin 54821
1-800-533-7454
e-mail: info@cable4fun.com
www.cable4fun.com

Cable Area NORTHWEST WISCONSIN Fall Color Tours

CABLE AREA

FALL FEST

LAST WEEKEND

OF SEPTEMBER

Self-guided tours through the
communities of Cable, Drummond,
Grand View & Namakagon

Fall Color Tour

No. 1

Starting in Cable, travel east on County Hwy M. This 52-mile tour of paved and unpaved roads will take you across the famous Namakagon River and the passageway for the old Ojibway Indian Trail. The variety of conifer & deciduous forests offers a brilliant array of fall color.

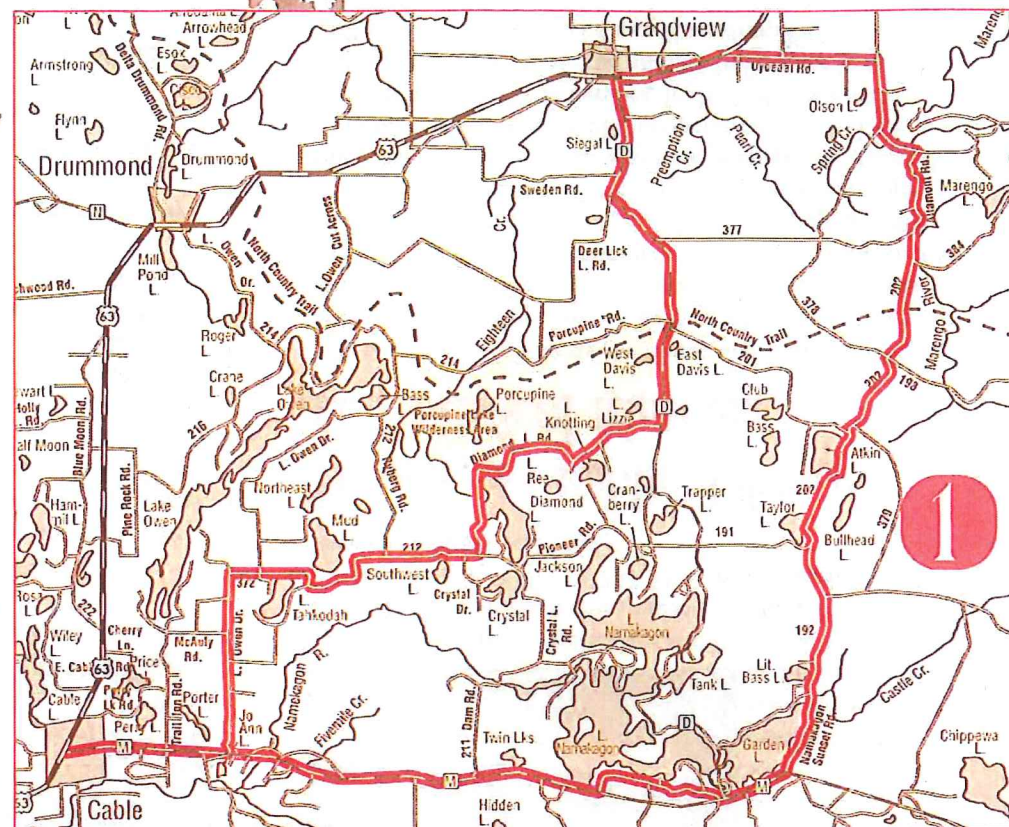
Continue on to the Garmisch Road, where a left-hand turn will take you through overhanging boughs of spectacular color. Approximately one mile down Garmisch Road you will find the Forest Lodge Nature Trail, an opportunity to walk on a self-guided tour through a hemlock swamp, aspen and birch stands and several bogs. Continue on Garmisch Road to its intersection with County Hwys D & M. Proceed east on County Hwy M one mile to Forest Road (FR) 192, for a trip through mixed hardwood forests, with occasional stand of red pine plantations.

Follow FR 192 (Namakagon Sunset Road) north. You will not make another turn until you reach FR 191 and FR 202. Here you will make a left-hand turn on to FR 202. Then take another left at Marengo Lake Road. Go left onto Altamont Road at the "I" intersection. Go left again at Dybedal Road until you reach Hwy 63. At Hwy 63, turn left and you will arrive at the community of Grand View.

In Grand View, take time to stop at the town park located two blocks east of Hwy 63. Enjoy the vista that gave Grand View its name, truly a grand view overlooking the Bibon Swamp area. While at the park, read the legend on the historical marker telling the story of Chief Namakagon and his lost silver mine.

From Hwy 63 in Grand View, proceed down County Hwy D toward Lake Namakagon, past the Great Divide of northern Wisconsin. Here waters falling on the west flow to the Mississippi and into the Gulf of Mexico, and waters flowing to the east empty into Lake Superior, the Great Lakes, and ultimately to the Atlantic Ocean.

Turn right at FR 374, known as N. Diamond Lake Road. This is a typical country road, narrow and winding with a good forest cover. When you reach the stop sign at Pioneer Road (FR 212), go right. FR 212 runs into and becomes FR 372. Continuing on Pioneer Road, you'll then proceed straight through the 4-way intersection, which becomes S. Lake Owen Drive. Soon you will reach Cty Hwy M. Turn right on Cty Hwy M and return to the community of Cable.

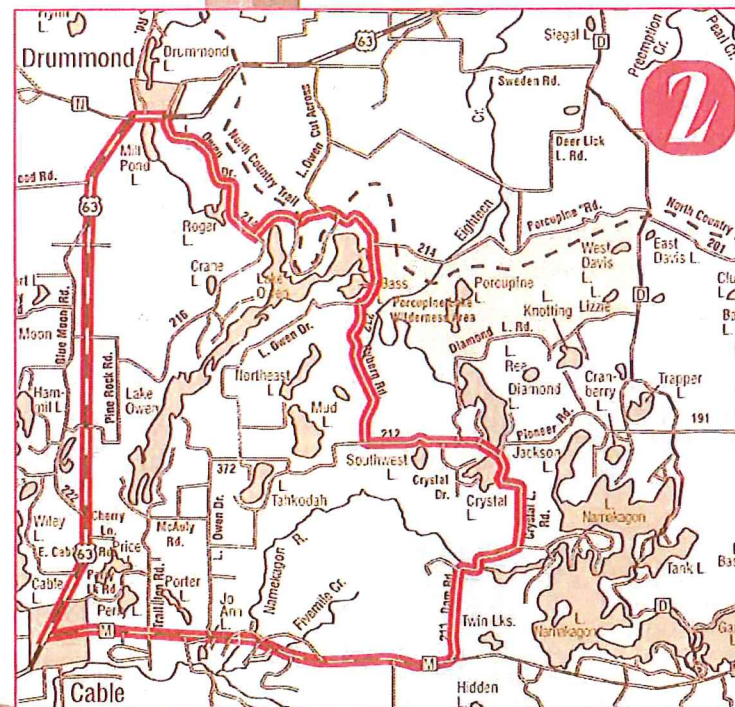


Fall Color Tour

No. 2

Tour No. 2 begins in Cable and heads east on County Hwy M, covering approximately 32 miles. This tour offers opportunities for rest stops, hiking, or a leisurely picnic lunch.

Proceeding east on County Hwy M, approximately 6 miles, look for FR 211, also known as the Dam Road. Turn left onto the Dam Road and you will find oak and maple forests that will provide spectacular bursts of color. You will cross over a bridge under which flows the headwaters of the Namakagon River. Proceed on the Dam Road to Crystal Lake Road and turn left. Follow Crystal Lake Road through the curves to the stop signs. Turn left at Pioneer Road (FR 212). Follow FR 212 as it turns to the right and becomes Ryberg Road. The upper portion of FR 212 forms the eastern boundaries of the Porcupine Lake Wilderness Area. Proceed to the stop sign and turn right



onto FR 214, known as Lake Owen Drive. When you proceed along Lake Owen Drive (FR 214), you will notice that FR 214 becomes FR 213...don't worry! You're still on Lake Owen Drive. Continue on until you reach Hwy 63 and the town of Drummond.

Along Lake Owen Drive you will see the signs for the Lake Owen public picnic grounds and swimming beach, an excellent setting for a rest stop or picnic lunch. At this point, the North Country National Scenic Trail crosses Lake Owen Drive.

At the intersection of Lake Owen Drive & Hwy 63, cross Hwy 63 and proceed straight ahead for two blocks. Turn left or west for one block and you'll come upon the brand-new Drummond Public Library & Historical Museum. After a stop at the Library/Museum, continue west and down the hill to the Drummond Town Park located next to Drummond Lake. You'll find this to be another lovely spot for a picnic or rest stop.

After a visit to Drummond, you will return to Hwy 63 traveling south to the community of Cable.

Fall Color Tour

No. 3

Beginning at Cable, travel north on Hwy 63. This 46-mile tour will take you past the Rainbow Lakes Wilderness Area, to the Delta Lakes area, and return to Drummond and Cable. Fall Color Tour No. 3 travels along both paved and unpaved roadways.

Traveling north approximately two miles, turn left on Blue Moon Road. As you proceed down Blue Moon Road, you will come to Picture Lake located on your right. Here, as you take a left on FR 222, known as Tri-Lakes Road, you will encounter twisting and rolling terrain through oak and maple forests. FR 222 will bring you to Cty Hwy N, a road you will crossover, to proceed on to FR 228 (Pigeon Lake Road).

On FR 228, you will see the signage

for the University of WI Pigeon Lake Field Stations. FR 228 turns right onto N. Delta Road, a primitive road. You will be on FR 228 for some time as it takes you through a beautiful forest of arching oak, maple and birch trees. When you arrive at W. Delta Rd. ("Y" crossing), stay to the right until you reach Delta Rd. (still FR 228) and proceed to Scenic Drive. Delta Lake Park will be on your left. When you arrive at County Hwy H, take a right and proceed a short distance to Delta Drummond Rd. (FH 35)-stay to your right!

Fall Color Tour No. 3 ends at the intersection of Delta Drummond Rd. and Hwy 63 in the town of Drummond. From this intersection, you may proceed north to town of Grand View, or south to Cable.

